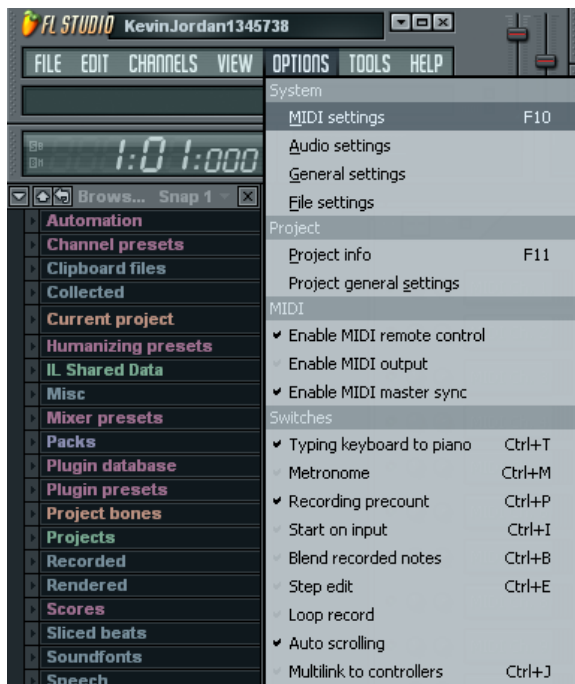
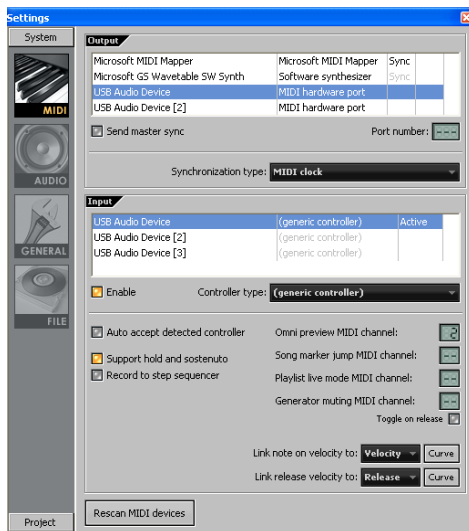


# Setting up Akai MPD or MPK Controllers in Fruity Loops

1. After connecting your controller via USB open **Fruity Loops** and go to **Options>MIDI settings**.



2. Choose **USB Audio Device** on both **Input** and **Output** as illustrated. Make sure you click **Enable** to activate the MIDI port.



- One 1st party device built into Fruity Loops is the **FPC**. You can load your own samples to the virtual pads on screen, and configure the pads to respond to the pads on the **MPD32/MPK49**. To load this device right click a cell in Fruity Loops, go to **Insert**, and choose the **FPC**.



*\*Each pad on the MPD32/MPK49 sends a MIDI Note #. You can view this number by pressing the pad and reading the displayed Note # on the LCD screen. Each virtual pad in the FPC responds to a MIDI Note #. You can view this number by clicking the virtual pad and reading the MIDI Note displayed in the upper right corner.*

- It is very easy to configure the **FPC** to learn the **MIDI Note #** arrangement without having to change the preset on your **MPD32/MPK49**. To do this click the pad you want the **FPC** to learn to, click where the **MIDI Note #** is displayed in the **FPC's** upper right corner, then click on **Learn**. Strike the pad you want to learn from on the **MPK49/MPD32** and the **FPC** will learn the **MIDI Note #** to the virtual pad you selected. You can do this for each pad until the whole preset is configured.



*\*Fruity Loops is able to host any variety of 3<sup>rd</sup> party plug-ins. Once you have the device configured we would suggest contacting Image Line in regards to any software specific questions.*